

User's Manual



<http://www.ActiveHDD.com>

Disclaimer

We have done our best to ensure that the material in this manual is both accurate and useful; however, please be aware that errors maybe exist, and it dose not make any guarantee concerning the accuracy of information found here or in the use to which it may be put.

Before you install ActiveHDD Pro, please backup all your important files and ensure that it is stored separately.

CONTENTS

CHAPTER 1 INTRODUCTION	4
1-1 Function	4
1-2 Features	4
CHAPTER 2 INSTALLATION.....	6
2-1 System requirements	6
2-2 Before installation.....	6
2-3 Start installation	6
2-3-1 Installation of driver for Windows 2000/NT/XP (software installation)	6
2-3-2 Installation of ActiveHdd card (hardware installation)	6
2-4 Express test	9
CHAPTER 3 BASIC OPERATION GUIDE.....	10
3-1 Definition of terms	10
3-2 Operation Guide.....	10
3-2-1 Hotkeys Menu	10
3-2-2 Set Protected Partition Menu.....	16
3-2-3 Set Parameters Menu.....	16
3-2-4 Protect CMOS	18
3-2-5 How to modify the password.....	18
3-2-6 How to uninstall ActiveHdd	19
3-3 Unique Serial Number and Serial-Number Password	19
3-4 How to set Multi-Boot	20
3-4-1 Setting Multi-Bootable-Partition Booting by BootMagic	20
3-4-2 Setting Multi-OS Booting by System Commander.....	20
3-4-3 How to Skip Possible Virus Warning	20
CHAPTER 4 TROUBLESHOOTING	22
I forgot the password.....	22
As if no ActiveHdd card is plugged in	22
Displaying blue screen and Windows breaks down.....	23

Chapter 1 Introduction

1-1 Function

- ✧ An express installation can be performed by pressing the <Enter> key 3 times, it will take you only five seconds.
- ✧ Once hard disk data is destroyed by any mistake, virus and/or hacker, only press <9> key one time to recover it in half a second.
- ✧ Support IDE and SCSI hard disk controller.
- ✧ Support PIO, DMA33, DMA66, Ultra DMA66, ATA-100 , Ultra ATA-100 IDE and **SATA** interface.
- ✧ Support FAT16/16E, FAT32/32E, NTFS/HPFS partitions and file systems.
- ✧ Support 256GB hard disk.
- ✧ Protect whole hard disk or selected partitions.
- ✧ Support not only DOS, Windows 3x/95/98/ME, but also Windows NT/2000/XP/**2003** server.
- ✧ Guard CMOS intelligently.

1-2 Features

- ✧ When first set up, saved, or recovered, ActiveHdd uses only 5KB of hard disk; when running , it uses 1.33MB of hard disk at most.
- ✧ A Dynamic Virtual Hard Disk Drive (DVHDD) is created and managed by ActiveHdd in guarded partitions for saving of new data. Theoretically ActiveHdd supports a DVHDD of 1207GB, practically it supports a 12GB one, so it supports Windows NT/2000/XP/2003 server and ensures that the Defrag routine can run and large amount of data can be saved when any partition is guarded.
- ✧ The magic Save function is best suitable for such application environment such as government, business, institute, home, finance, securities, accounting and the military. When any partition is guarded, all data written on it, will be recorded as new data. Once we use recovery or uninstallation function, all new data will be cleaned. ActiveHdd provides

Save function to write data onto hard disk.

- ✧ Anti-Evil-Attack function is best suitable for cyber cafe and the computer labs of schools and colleges. When the attacker deletes all installation information on the guarded partitions, and reboots the computer, ActiveHdd will enter a Security Check routine. OS can only be booted when the manager inputted the correct serial-number password.

Chapter 2 Installation

2-1 System requirements

CPU: 386 or above
Memory: 8M or more
Hard-disk: IDE, EIDE, SATA or SCSI

2-2 Before installation

- ✧ Make sure that your computer meets the above-mentioned system requirements.
- ✧ If a similar product has been installed, remove it and its drivers.
- ✧ Scan and clean viruses with anti-virus software. A freshly installed system will give best results at there will be no virus or spyware present
- ✧ Make sure there is no static electricity.

2-3 Start installation

There are two steps of installation (hardware installation and software installation) separately for **ActiveHDD Pro**.

2-3-1 Installation of driver for Windows 2000/NT/XP/2003

(software installation)

- ✧ Boot the computer with Windows[®] 2000/NT/XP/2003.
- ✧ Run Install.exe in the driver disk or CD supplied with the product.
- ✧ Reboot your computer to complete the installation.

2-3-2 Installation of ActiveHDD Pro card

(hardware installation)

- ✧ Make your computer turn off.
- ✧ Insert the card into one of empty PCI slots on the motherboard of the computer.
- ✧ Turn on your computer.

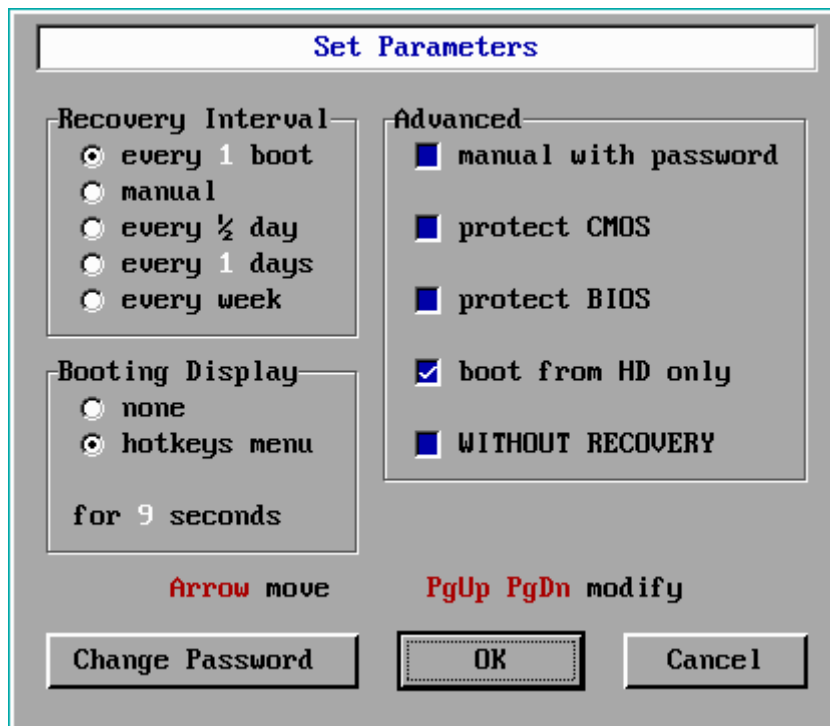
- ✧ Check the setting of CMOS to make sure the parameters of hard disk are correct:
 - If there is **Boot From LAN First** or similar item, **enable** it.
 - Disable the **Virus Warning** item in CMOS setting.
 - If there is a Hard Disk **Recovery** program in CMOS, **disable** it.

- ✧ Reboot your computer, the following screen (Installation menu) will appear:



(Installation Menu)

- ✧ Press <Enter> key three times, express installation will be finished with default parameters setting.
- ✧ Press **Install**, the following screen (Set Parameters Menu) will appear:

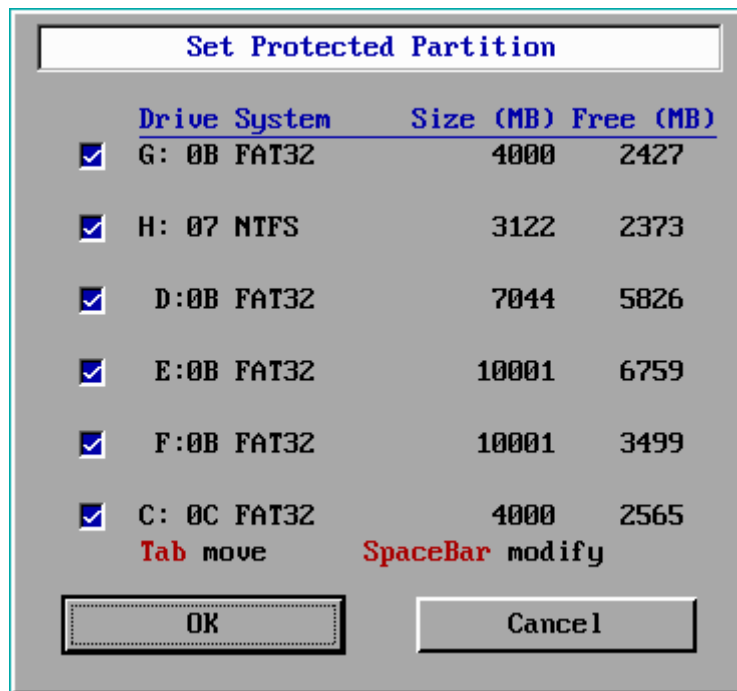


(Set Parameters Menu)

- ✧ Press < **Tab** > key to move.
- ✧ Press < **Space Bar** > or < **PgUp** > < **PgDn** > to modify the setting.
- ✧ Press **OK** to save the setting and press **Cancel** to give up the change of setting.

Noted: Without recovery : if you choose it, in Hotkey menu will appear this option, the detail function kindly refer to 3-2-1 Hotkey menu.

- ✧ After pressing **OK**, the following screen will appear (Set Protected Partition Menu):



(Set Protected Partition Menu)

- ✧ Press < **Tab** > key to move.
- ✧ Press < **Space Bar** > to modify the setting.
- ✧ Press **OK** to save the setting and press **Cancel** to give up the change of setting.
- ✧ After pressing **OK**, The computer will reboot automatically. Now, you have finished the installation of the **ActiveHdd**.

2-4 Express test

- ✧ Create a folder at the root of drive C, and create another at Windows desktop.
- ✧ Reboot your computer, if the folders disappear, it means that the ActiveHdd functions well and has automatically finished recovery.

Chapter 3 Basic Operation Guide

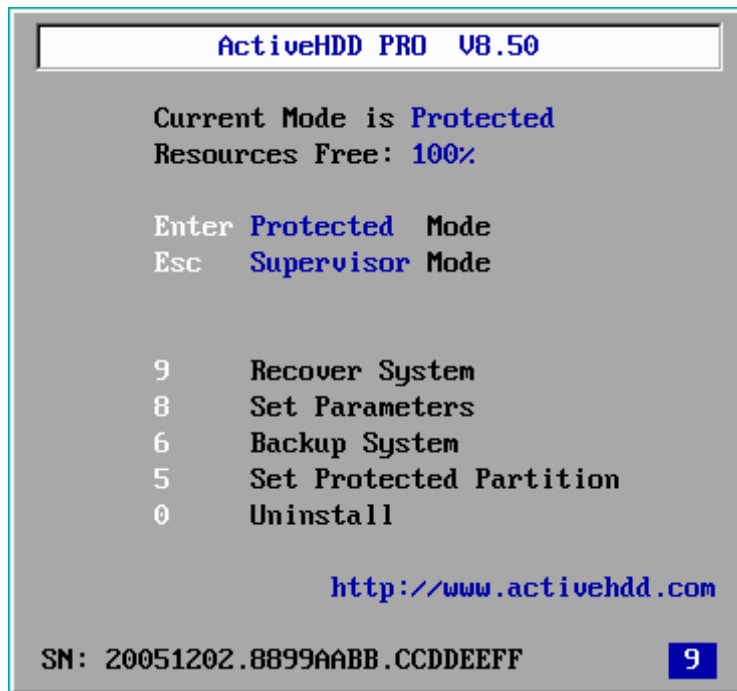
3-1 Definition of terms

- **Protected Mode:** General operators such as students are recommended to use this mode. All useful data, files or programs are set to be protected and will be protected under this mode. All modification of the protected data will be recovered after **Restore Data** operation is executed.
- **Supervisor Mode:** The data on hard disk is not protected under this mode, the operator can really install, uninstall, upgrade, etc. even if the drive is set to be protected.
- **Save Data:** If useful data are created under protected mode and need to be saved, you can perform this operation to update the changes you made during last session.
- **Recover Data:** No matter how do you set the parameter, you could recover data by press this hotkey <9> key.
- **Manual with password:** If you select this item, you have to input password after press <9> key, otherwise, you don't need password to recover data.

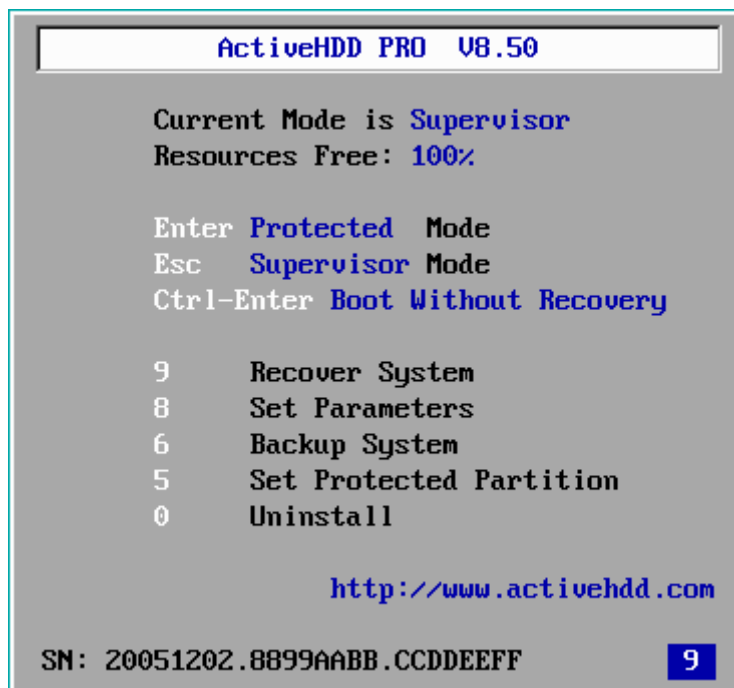
3-2 Operation Guide

3-2-1 Hotkeys Menu

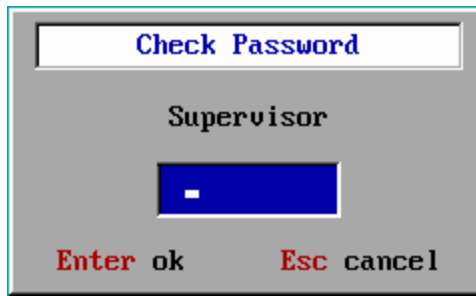
When booting your computer with HDD ActiveHdd installed completely, the following screen (Hotkeys Menu) will appear:



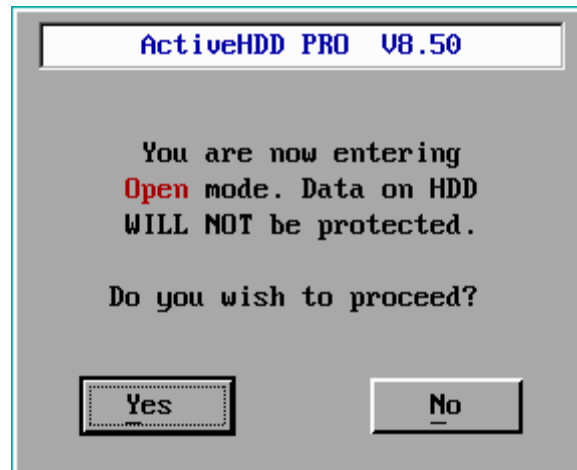
If you choose Boot without recovery in set parameter menu, the following screen will appear:



- ✧ Pressing any key could stop the time counting.
- ✧ Press <Enter> key, you will enter protected mode, in this mode, all changes in the protected partitions will be protected.
- ✧ Press <Esc> key, the following screen will appear:



After inputting the correct password, press <Enter> key, the following screen will appear:



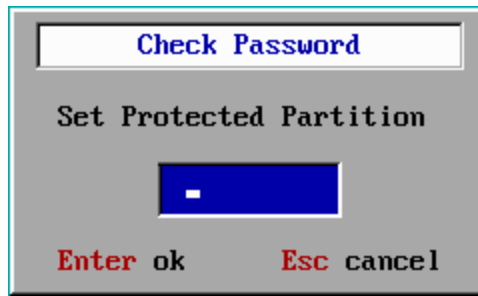
Press **Yes**, you will enter Operating System.

- ✧ Press **Ctrl-Enter**, you will enter into **Keep Mode**, it will not check the recovery interval, Even if the recovery interval is "Every 1 boot", "Keep Mode" will keep data in the status of last shutdown or power-off

Notice: If user press Ctrl-Enter to use Boot without recovery, then all changed data will be temporary saved in HDD, If you want to enter into supervisor in next reboot, kindly noted all changed data will be recovered.

- ✧ Press <**5**> key to enter Set Protected Partition Menu, in which you could set protection or not for each drive.

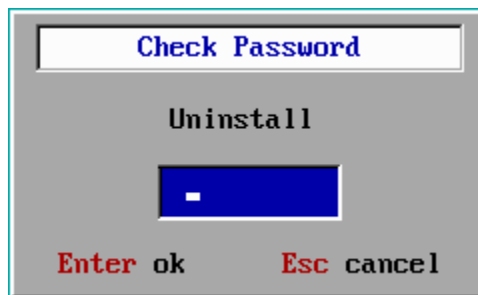
After pressing <**5**> key, the following screen will appear:



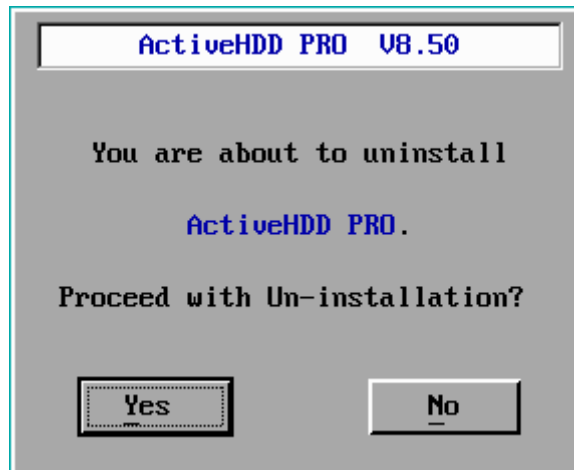
After inputting the correct password, press <Enter> key to enter Set Protected Partition menu.

- ✧ Press <O> key to uninstall ActiveHdd.

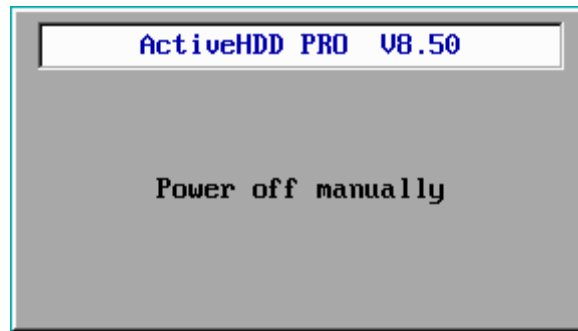
After pressing <O> key, the following screen will appear:



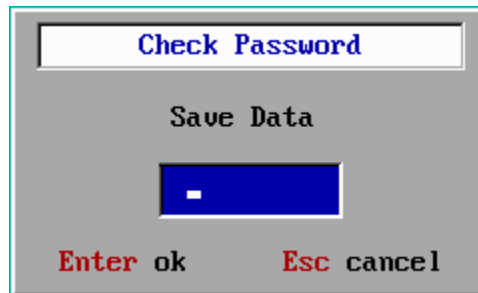
After inputting the correct password, press <Enter> key, the following screen will appear:



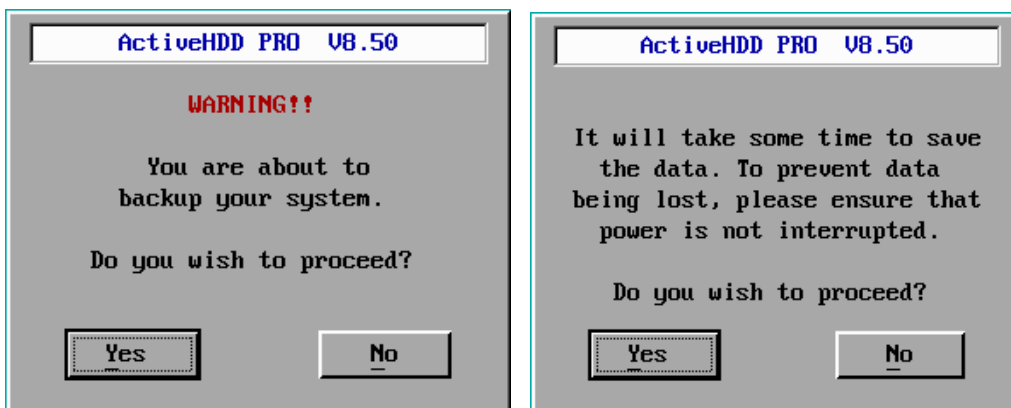
If you click **Yes**, the ActiveHDD Pro will automatically delete all the installation information, then the following screen appears:



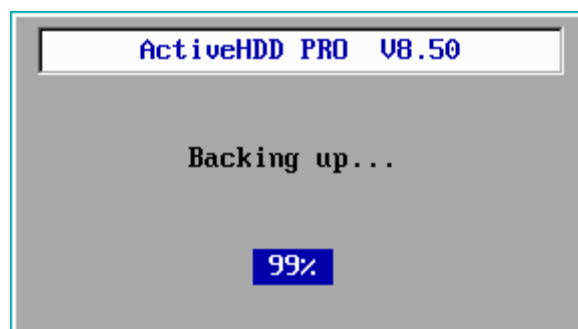
- ✧ Press <6> key to save the changes you made after last saving. After pressing <6> key, the following screen will appear:



After inputting the correct password, press <Enter> key, the following screen will appear:



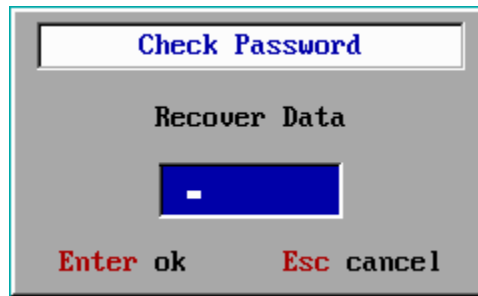
Press **Yes**, the following screen will appear:



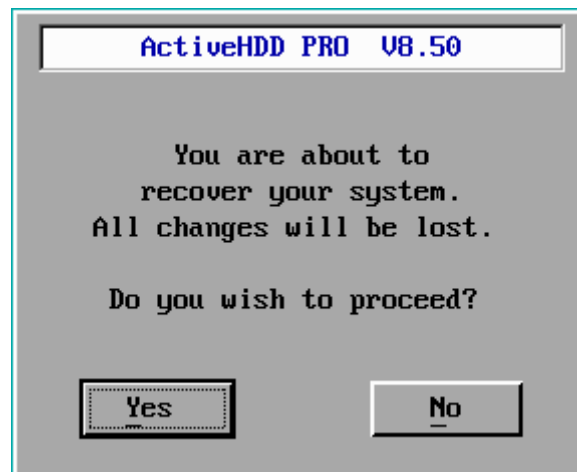
then the computer will automatically reboot.

- ✧ Press <9> key to recover the changes.

After pressing <9> key, the following screen will appear:



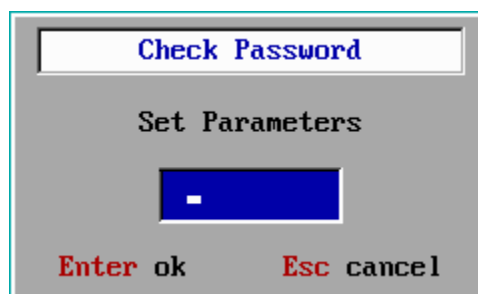
After inputting the correct password, press <Enter> key, the following screen will appear:



After pressing **Yes**, you will enter into Operating System with all changed data will be recovered..

- ✧ Press <8> key to enter Set Parameters menu, in which you could set the parameters of HDD ActiveHdd.

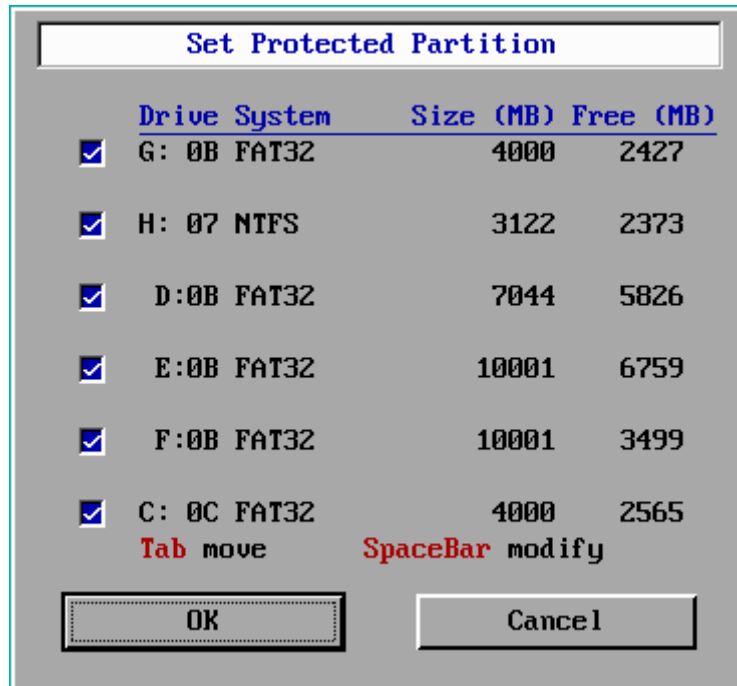
After pressing <8> key, the following screen will appear:



After inputting the correct password, press <Enter> key to enter Set Parameter menu.

3-2-2 Set Protected Partition Menu

Press <5> key in Hotkeys Menu, after inputting the correct password, the following screen will appear:



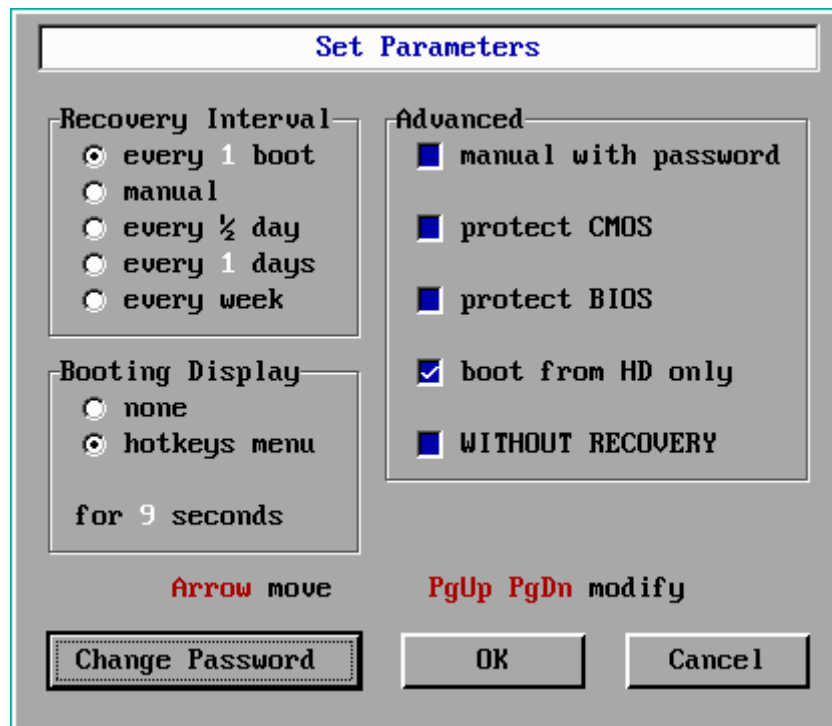
the default setting is protected all drives.

Press <Tab> to move and press <Space Bar> to mark or not mark **V** for every drive.

If there is mark of **V**, this drive will be protected, otherwise will not be protected.

3-2-3 Set Parameters Menu

Press <8> key in Hotkeys Menu, the following screen will appear:

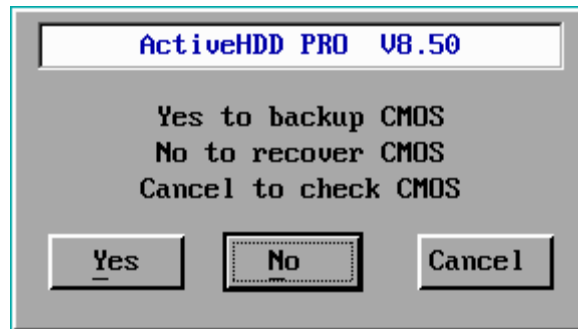


- ✧ The default settings are as the above settings.
- ✧ You could set the recover interval from every 1-99 boot, or every 1/2 day, or every 1-99 days, or every week, or manual recover.
- ✧ If you mark **V** in the item of manual with password, that means you have to input password when you press <9> key to recover data; otherwise, you do not need.
- ✧ If you mark **V** in the item of protect CMOS, that means the setting of CMOS is protected.
- ✧ If you mark **V** in the item of protect BIOS, the BIOS will be protected, otherwise, not be protected.
- ✧ If you mark **V** in the item of boot from HD only, that means the computer has to boot from hard disk, otherwise not.
- ✧ If you choose Booting Display as **none**, that means when the computer boots, there will not be any screen about ActiveHdd and the computer will enter directly into the operating system. Still you could get the Hotkeys Menu by pressing <8> key when booting your computer.
- ✧ If you choose Booting Display as **hotkeys**, the Hotkeys menu will appear when booting your computer.
- ✧ The displaying time could be modified from 15 seconds to 1 second, the default time is 9 seconds.

- ✧ You could press <Tab> to move from one item to another, press <Space Bar> or <PgUp>/<PgDn> to modify the setting.

3-2-4 Protect CMOS

If you choose protect CMOS in Set Parameters menu, and if there are any changes for the setting of CMOS, the following screen will appear:



- ✧ Press **Yes**, the changes of CMOS will be saved.
- ✧ Press **No**, the changes of CMOS will be recovered.
- ✧ Press **Cancel**, the computer will reboot three times, you could make any change for CMOM during the three reboots, and all changes will be saved permanently.

3-2-5 How to modify the password

The default password is **function**, all letters are in smaller case.

Press **Change Password** in the Set Parameters menu, the following screen will appear:



After inputting the new password, press <Enter> key, the following screen will appear:



Input the new password again, then press <Enter> key, the following screen will appear:



Press **OK**, the password is modified now.

If the two passwords you enter are not consistent, or you pressed key **Esc**, the following screen will appear to indicate that the password is not changed.



3-2-6 How to uninstall ActiveHdd

Press <**O**> key in Hotkeys Menu, please refer to 3-2-1.

3-3 Unique Serial Number and Serial-Number Password

If you press key **F1** when entering the password, ActiveHdd will display its serial number.

20040214.8899AABB.CCDDEEFF

- ✧ 20040214 is the manufacture date of your HDD ActiveHdd card.
- ✧ 8899AABB.CCDDEEFF is the serial number. It is unique.

By the serial number, you can get the serial number password. The serial number password is an all-purpose password corresponding with your unique serial number, it is used in case you forgot the password, or ActiveHdd carries security check to prevent evil-attack, and it can be only got from the distributors.

3-4 How to set Multi-Boot

3-4-1 Setting Multi-Bootable-Partition Booting by BootMagic

BootMagic is a software packed with PQmagic. It is specially used in installing Multi Bootable Partitions.

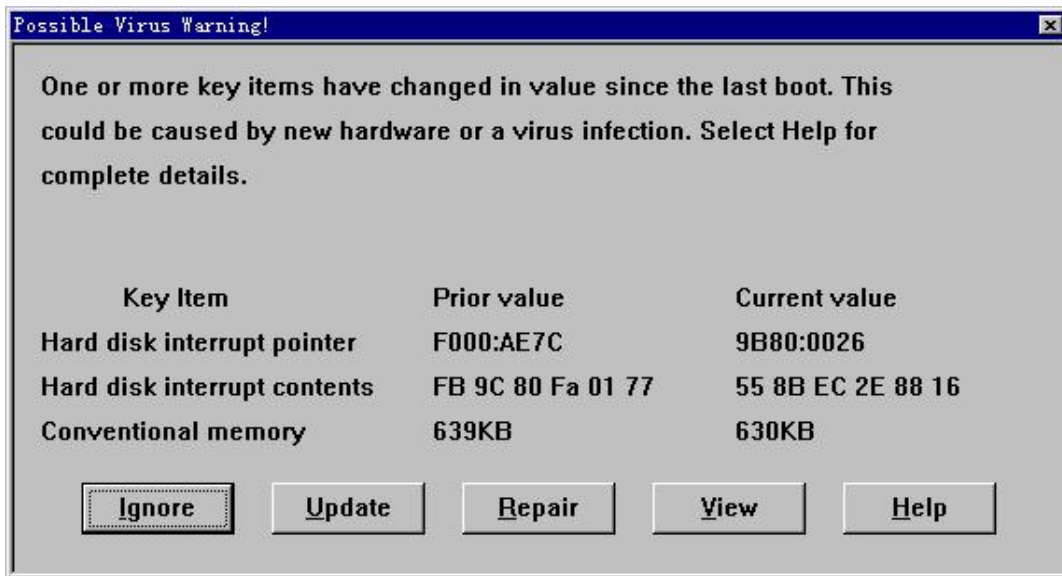
Please set HD partitions in PQmagic first, and then install BootMagic, OS, applications and the ActiveHdd in this order.

3-4-2 Setting Multi-OS Booting by System Commander

At the first, install OS and applications. At the second, install System Commander. At last, install ActiveHdd.

3-4-3 How to Skip Possible Virus Warning






At the first time System Commander starts after ActiveHdd installation, the Possible Virus Warning window will appear as follows.




Press <U> key to update. Reboot the computer and save hard disk data, and then as long as you do not uninstall the ActiveHdd, this window will not appear whenever you recover hard disk data.

Chapter 4 Troubleshooting




Legends


-  Detailed description of the problems.
-  Analysis of possible causes.
-  Ways to solve the problems.
-  Further notes.
-  Caution.

I forgot the password




	Try default password first. If that won't do, please get the serial-number password from your distributor.
---	--

As if no ActiveHDD Pro card is plugged in



	After rebooting, no installation menu appears, and the computer starts OS as usual.
	<p>For the case, the possible causes may be</p> <ul style="list-style-type: none"> ✧ The card is not properly plugged. ✧ The power supply has poor loading capacity. ✧ CMOS is not properly configured. ✧ The boot mode does not match BIOS. Please refer to Boot Mode section in the Advanced Guide chapter to change the Boot Mode by pressing <Ctrl+B>.
	<ul style="list-style-type: none"> ◆ Plug the card again, or change a slot, or clean the slot/the card. ◆ Retry it with another ActiveHDD Pro card. If the power supply does

	<p>not work, contact your computer distributor or the manufacturer, and replace either the power supply or the computer itself.</p> <ul style="list-style-type: none"> ◆ For some AMI BIOS motherboard, set the CMOS parameter "BIOS FEATURES SETUP" as follows: Set First boot device to LAN. Or set Boot from LAN first to Enable. <p>Certain motherboards or BIOS may also require Set PnP OS installed to Yes.</p> <ul style="list-style-type: none"> ◆ Update BIOS.
	<p>There is little possibility that the above causes occur combinedly. Improper CMOS configuration or Boot Mode not matching BIOS perhaps occurs with motherboards using AMI BIOS.</p>

Displaying blue screen and Windows breaks down



	<p>After rebooting, PC displays blue screen with error message.</p>
	<ul style="list-style-type: none"> ◆ The free space in hard disks is limited. There is no cache for the ActiveHDD Pro ◆ Anti-Virus software or System Performance Administration software has been installed.
	<ul style="list-style-type: none"> ✧ Recover the hard disk data, or set it to Automatic Recovery. ✧ Uninstall the ActiveHDD Pro, Anti-Virus software and System Performance Administration software. ✧ Reinstall it after the system is Ok.

PC always requires to input SN password


	<p>ActiveHDD Pro provides special anti-evil uninstallation and hacker affection, if ActiveHDD Pro is not normally uninstalled, it will require to input SN password before enter into OS</p>
	<ul style="list-style-type: none"> ✧ Only after inputting correct SN password that is provided from your distributors. You could enter into OS.

	<ul style="list-style-type: none"> ✧ If you have no SN password on hand, please contact with your distributor in time for the solutions.
--	---

After installation of ActiveHDD Pro, the PC always reboot before Windows loading

	ActiveHDD Pro provides three kinds of Boot mode, each kind could meet difference BIOS setting.
	<ul style="list-style-type: none"> ✧ After reboot, Press <Ctrl+B> just after CMOS setting list while before OS loading, ActiveHDD Pro Boot mode menu will appear. ✧ Choose the second or third Boot mode to try.

When I set hotkey menu as hidden, how could I have it shown back when I want to check the Hotkey operation

	<ul style="list-style-type: none"> ✧ After reboot, press <Ctrl+M> just after CMOS setting list while before OS loading, and reconfig ActiveHDD Pro to show Hotkeys menu.
---	---